



**THUNDERSTRUCK**  
R E S O U R C E S

# EXPLORING FOR ZINC, COPPER, SILVER & GOLD IN FIJI

*March, 2018*

# Forward Looking Statements

## 前瞻性陳述

*Certain oral and written statements contained or incorporated by reference in this presentation, including information as to future financial or operating performance of Thunderstruck and its projects, constitute forward-looking statements. All statement, other than statement of historical fact, are forward-looking statements. The words “anticipate”, “believe”, “budget”, “contemplate”, “continue”, “estimate”, “expect”, “intend”, “may”, “plan”, “schedule”, “target”, “will” and similar expressions identify forward-looking statements.*

*Forward-looking statements include, among other things, statements regarding targets, estimates and assumptions in respect of copper, gold, silver and zinc or other metal production and prices, operating costs and results, capital expenditures, mineral reserves and mineral resources and anticipated grades and recovery rates. Forward-looking statements are necessarily based upon a number of estimates and assumptions related to future business, economic, market, political, social, and other conditions that while considered reasonable by Thunderstruck, are inherently subject to significant uncertainties and contingencies. Many known and unknown factors could cause actual events or results to differ materially from estimated or anticipated events or results reflected in such forward-looking statements. Such factors include, but are not limited to: operating risks; uninsurable risks; uncertainties inherent in ore reserve and resource estimates: dependence on third party smelting facilities; environmental regulation and liability; currency risks; effects of inflation on results of operations; factors relating to title to properties; native landowner issues; dependence on key personnel; and future share price volatility and also include unanticipated and unusual events, many of which are beyond Thunderstruck's ability to control or predict.*

*Thunderstruck disclaims any intent or obligation to update any forward-looking statements, whether as a result of new information, future events or results or otherwise. All forward-looking statements made in this presentation are qualified by the foregoing cautionary statements. Investors are cautioned that forward-looking statements are not guarantees of future performance and, accordingly, not to put undue reliance on such statements.*

**本報告包含或者引用的部分口頭或書面陳述構成前瞻性陳述,包括有關Thunderstruck及其項目未來財務或運營表現的信息。除歷史事實以外的所有陳述都屬前瞻性陳述。“預計”、“相信”、“預算”、“預期”、“繼續”、“估測”、“期望”、“意圖”、“可能”、“計劃”、“日程表”、“目標”、“將”等字眼和類似表達可以辨別前瞻性陳述。**

**前瞻性陳述包括有關銅、黃金、白銀、鋅或其他金屬產量和價格、運營成本及結果、資本支出、礦產儲量和礦產資源量以及預期品位和回收率的目標、估測和假設相關的陳述等。前瞻性陳述以未來業務、經濟、市場、政治、社會等多方面Thunderstruck認為合理的估測和假設為基礎,受多種不確定性和意外事件約束。許多已知和未知風險可能導致實際事件或結果與這些前瞻性陳述中反應的估測或預期事件或結果大為不同。這些因素包括但不限於:運營風險,不能投保的風險,礦石儲量和資源量預估固有的不確定性,對第三方冶煉設施的依賴,環境監管和責任,匯率風險,當地土地所有人問題,對核心人員的依賴,未來股價波動,以及意料之外和反常事件,其中許多都在Thunderstruck的控制和預期能力之外。**

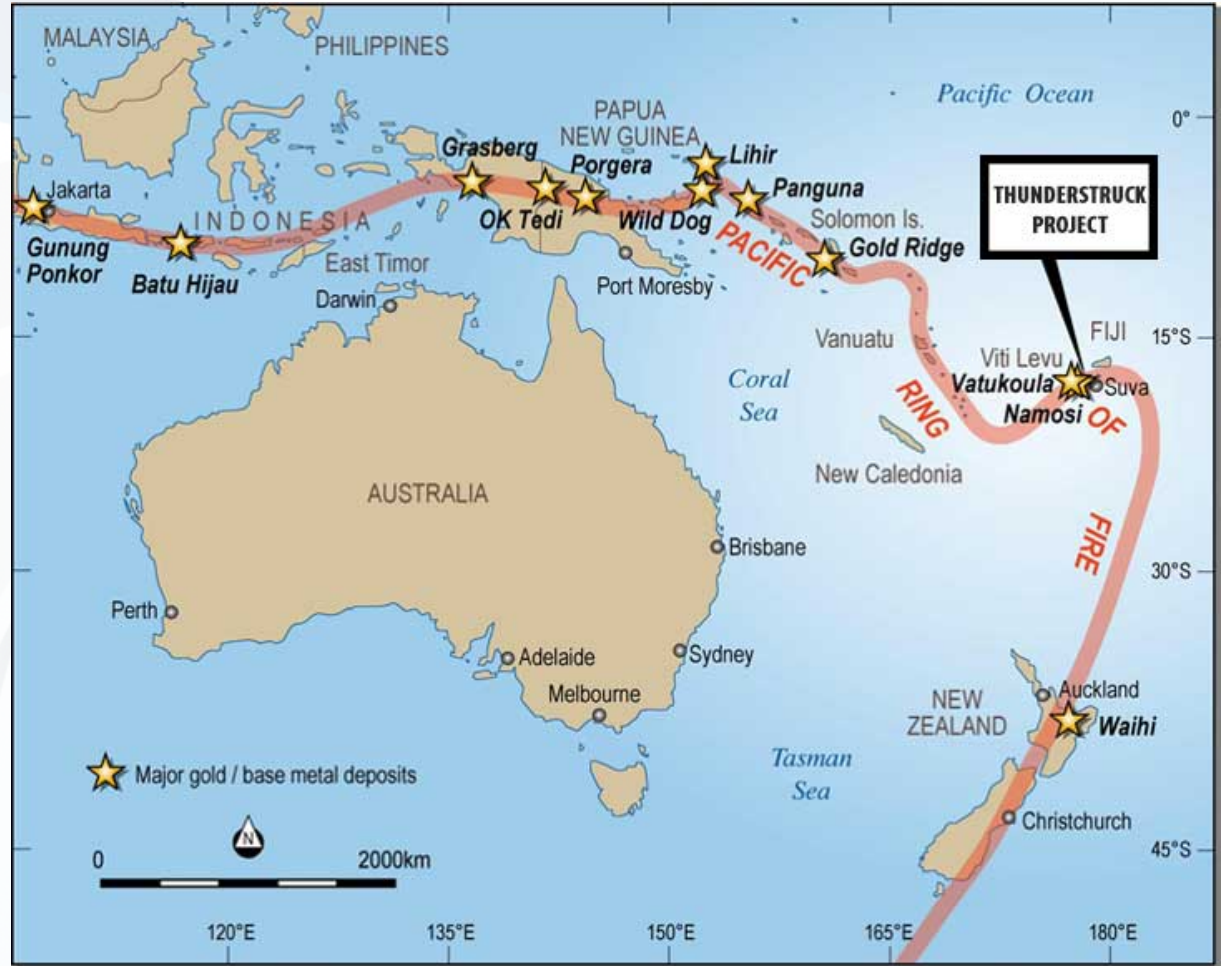
**無論是由于新信息、未來事件或結果還是其他原因, Thunderstruck均無計劃和義務對前瞻性陳述進行更新。所有本報告中做出的前瞻性陳述都受前述警戒性陳述限定。提醒投資者前瞻性陳述并不能對未來表現予以保證,因此切勿過分信賴這些前瞻性陳述。**



# The Highly Prospective Ring of Fire

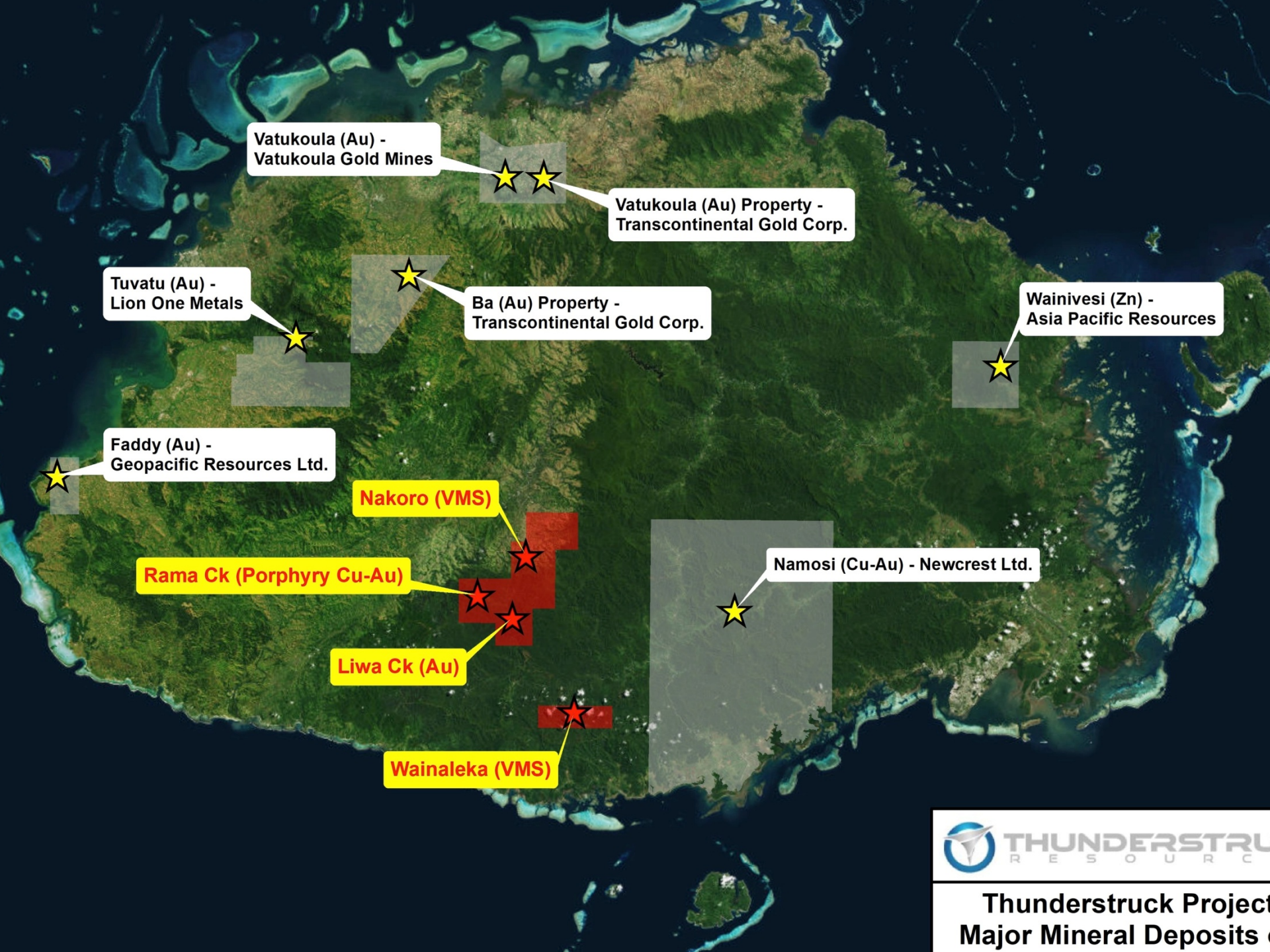
## 前景廣闊的火山帶

- 斐濟位于太平洋火山帶，這裏包含許多世界上主要的金銅礦床
- 斐濟是太平洋最發達的經濟體之一，政府對礦業友好









Vatukoula (Au) -  
Vatukoula Gold Mines

Vatukoula (Au) Property -  
Transcontinental Gold Corp.

Tuvatu (Au) -  
Lion One Metals

Ba (Au) Property -  
Transcontinental Gold Corp.

Wainivesi (Zn) -  
Asia Pacific Resources

Faddy (Au) -  
Geopacific Resources Ltd.

Namosi (Cu-Au) - Newcrest Ltd.

Nakoro (VMS)

Rama Ck (Porphyry Cu-Au)

Liwa Ck (Au)

Wainaleka (VMS)



**Thunderstruck Project**  
**Major Mineral Deposits**



## Surrounding Mines附近的礦山

- Fiji has a long history of mining and is host to many mining companies in varying stages of development 斐濟有著悠久的采礦史，有著許多處於不同開發階段的礦業公司
- **Vatukoula Gold Mine**(*production*) operating for the past 75 years, has produced in excess of 7M ounces of gold and 4.2M ounces of gold remain/過去75年中一直運營的 **Vatukoula金礦** (生產) 已經生產超過700萬盎司黃金，剩餘420萬盎司的礦藏
- **Newcrest/Mitsubishi Namosi**(*pre-feasibility*) copper-gold project contains 2.2B tons @ 0.34% Cu and 0.11 g/tAu /**Newcrest/三菱Namosi** (預可行) 銅-金項目包含22億噸銅品位0.34%、金品位0.11克/噸的資源量
- **Lion One's Tuvatu Project**(*PEA*) contains 767,500 ounces of gold/**Lion One**旗下Tuvatu項目 (初步經濟評估) 包含767,500盎司黃金
- **Thunderstruck** is in possession of one of the most highly prospective land packages on the island(*see map on next slide*)/**Thunderstruck**擁有島上前景最廣闊的土地組合之一 (見下圖中的地圖)



## Why Fiji? 爲何是斐濟？

- A pro-mining government with a long history of mining including the Vatukoula Gold Mine, in operation for over 75 years. 斐濟政府支持礦業，有著悠久的采礦史，斐濟Vatukoula金礦已經運營超過75年
- Low sovereign, political and social risks 主權、政治和社會風險低
- 100% owned by Thunderstruck/Thunderstruck 100%.
- High grade zinc, copper, silver, and gold potential 高品位鋅、銅、白銀和黃金潛力
- Projects are close to Asian markets with a deep-water port nearby, hydroelectric dams, and paved roads 項目靠近亞洲市場，附近有深水港，水力發電站，已通公路
- Significant mines and deposits located nearby to Thunderstruck/ Thunderstruck 附近附近有成功的礦山和礦床

# Excellent Infrastructure

## Port

- Deep water port ~50 km via modern highway



## Power

- Hydroelectric power station, Monasavu Dam, 20 km northeast of *Nakoro*



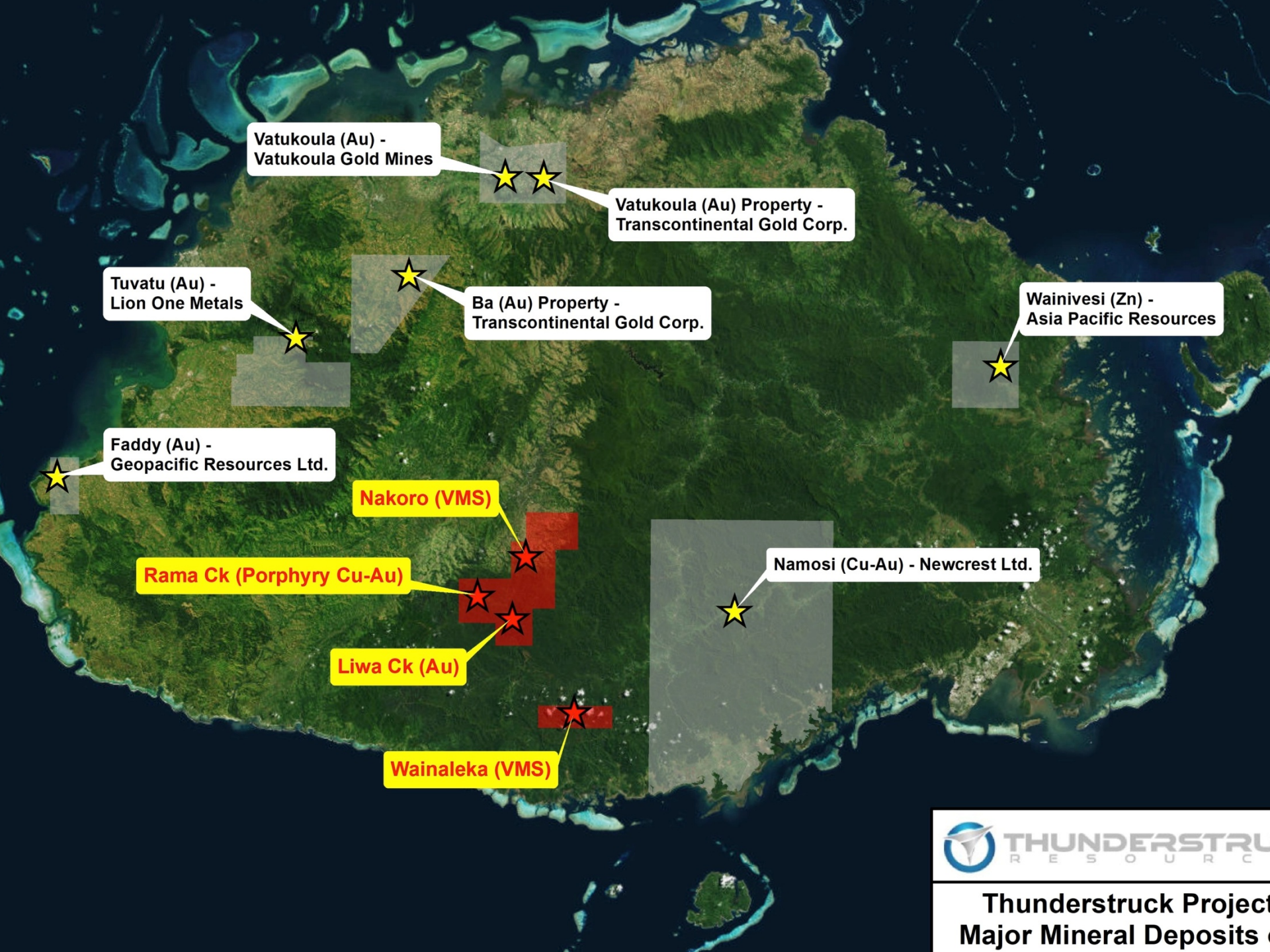
## Roads

- Forestry roads traverse all licence areas



# ZINC, COPPER and GOLD!!

- **Two zinc/copper discoveries drilled by Anglo American, averaging 7% Zn and 2% Cu**
- **One large Cu porphyry also drilled by Anglo with 244m of .22% copper**
- **One high grade gold asset**



Vatukoula (Au) -  
Vatukoula Gold Mines

Vatukoula (Au) Property -  
Transcontinental Gold Corp.

Tuvatu (Au) -  
Lion One Metals

Ba (Au) Property -  
Transcontinental Gold Corp.

Wainivesi (Zn) -  
Asia Pacific Resources

Faddy (Au) -  
Geopacific Resources Ltd.

Namosi (Cu-Au) - Newcrest Ltd.

Nakoro (VMS)

Rama Ck (Porphyry Cu-Au)

Liwa Ck (Au)

Wainaleka (VMS)

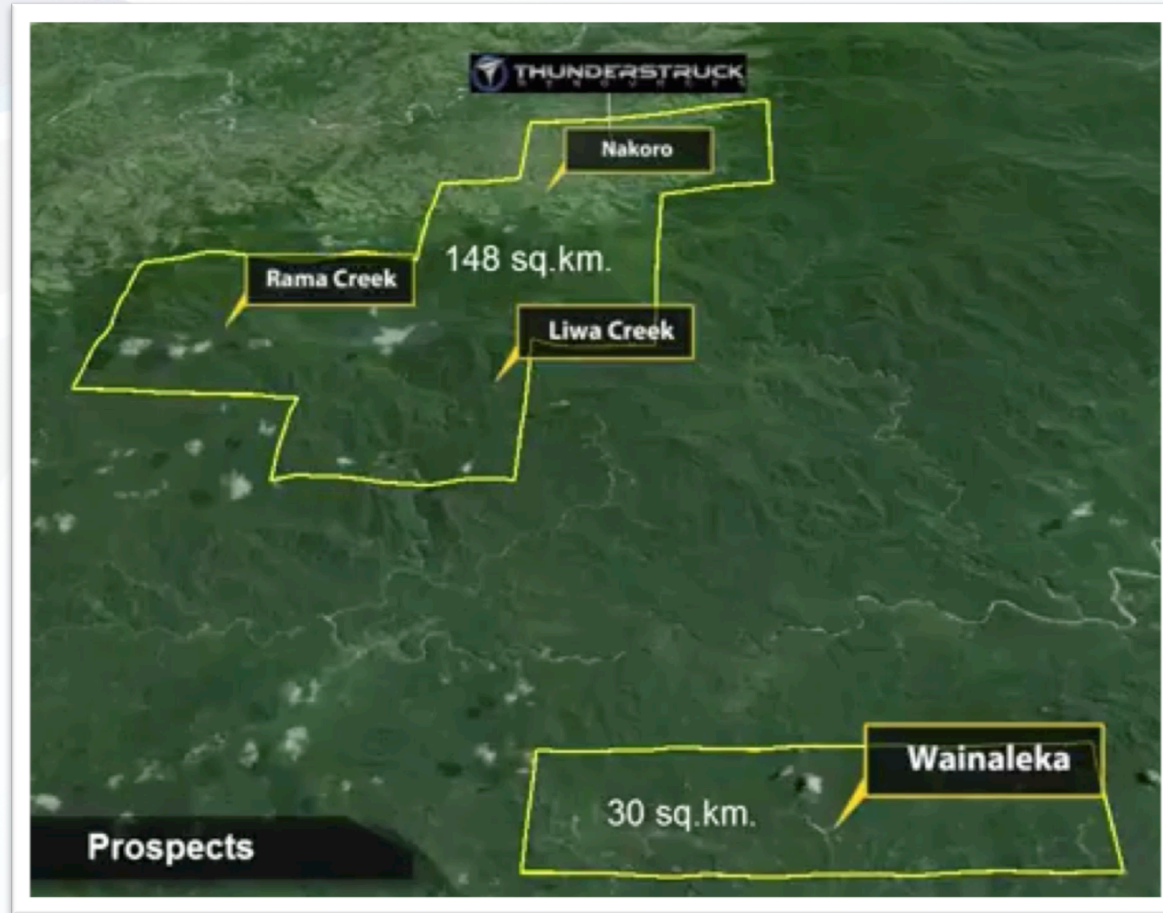


**Thunderstruck Project  
Major Mineral Deposits**

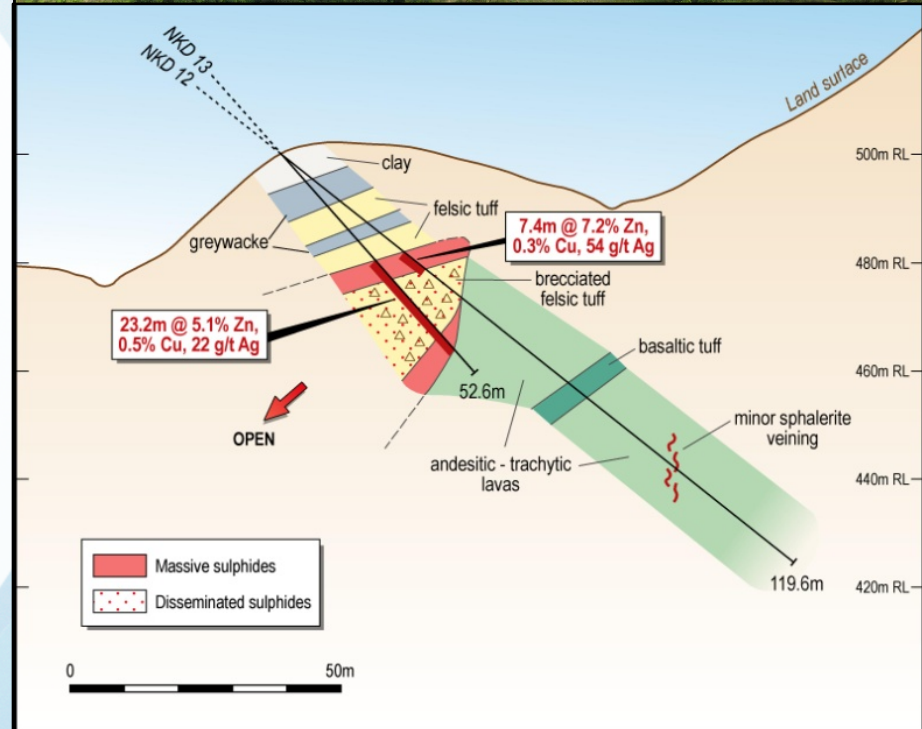
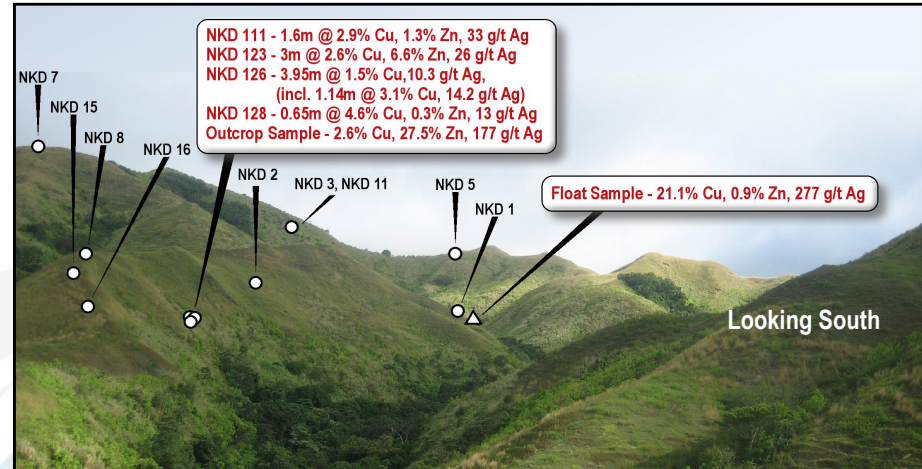
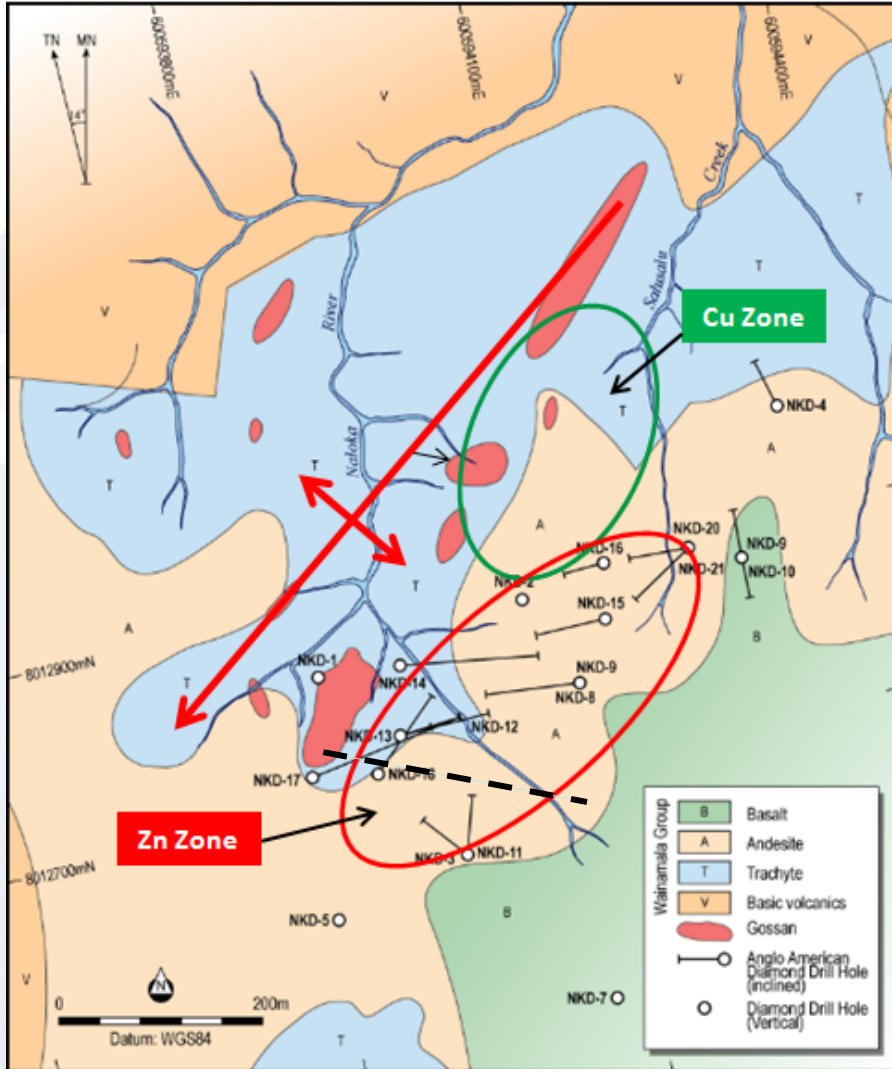


# Thunderstruck's Mineral Prospects

- **Wainaleka** – 30 sq. km zinc-copper VMS prospect
- **Nakoro** – 148 sq. km with three priority targets –
  - Nakoro – *zinc-copper VMS*
  - Liwa Creek – *epithermal gold-silver*
  - Rama Creek – *copper-gold porphyry*

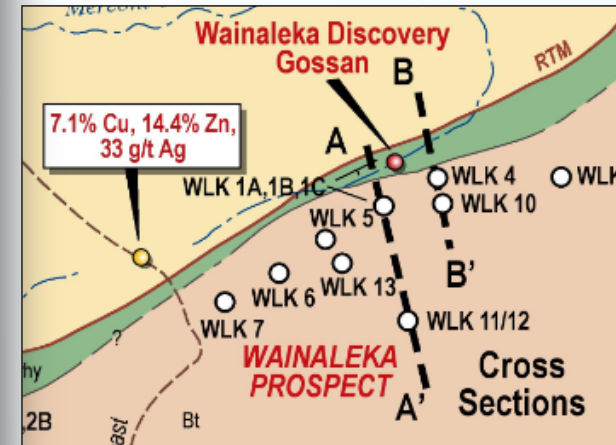
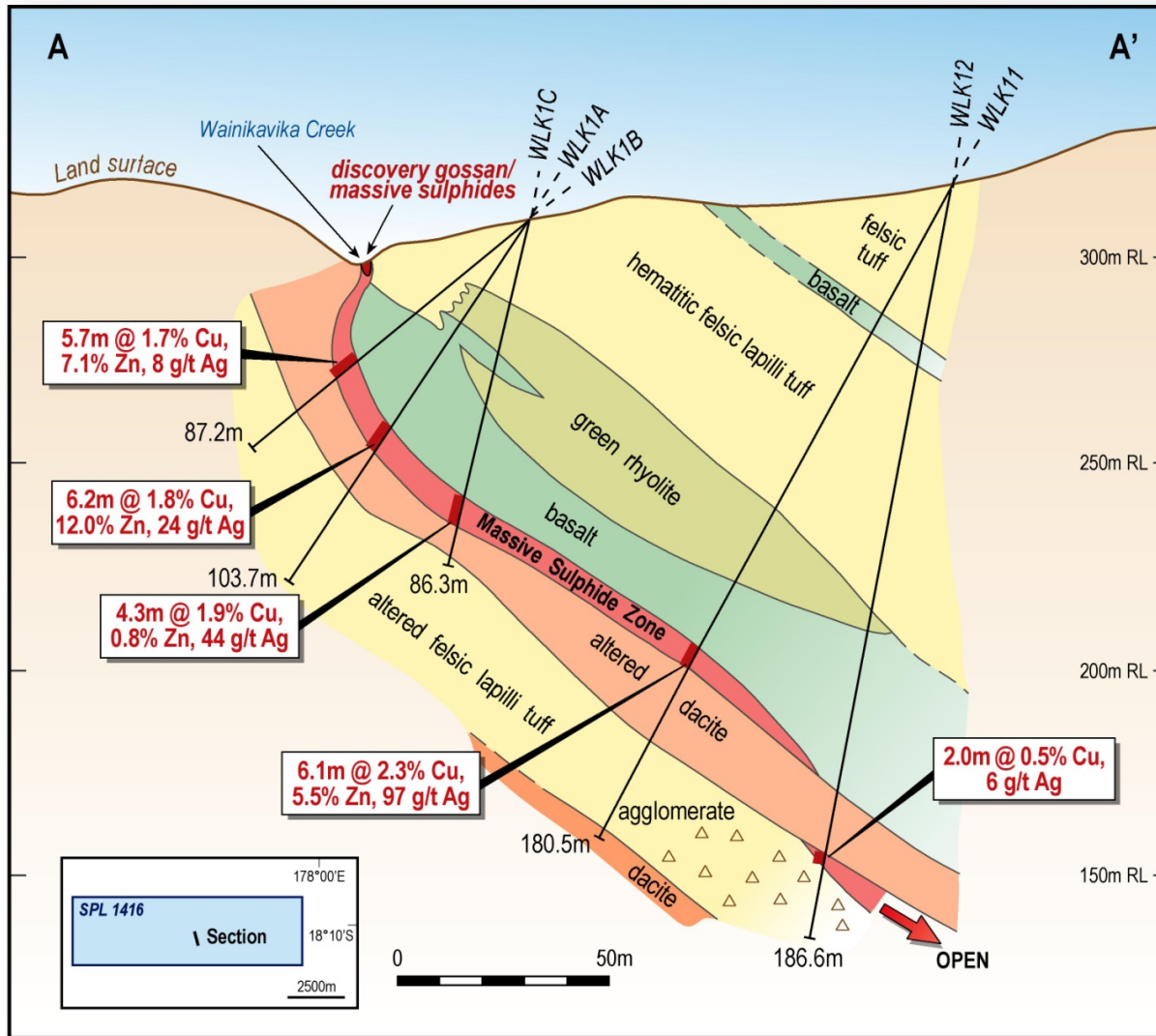


# Nakoro – Drill Intercepts





# Wainaleka – Drill Cross Section A









# Zinc price monthly movements in China Shanghai future goods market. From July 2011 to February 2018



# 5 YEAR ZINC PRICE

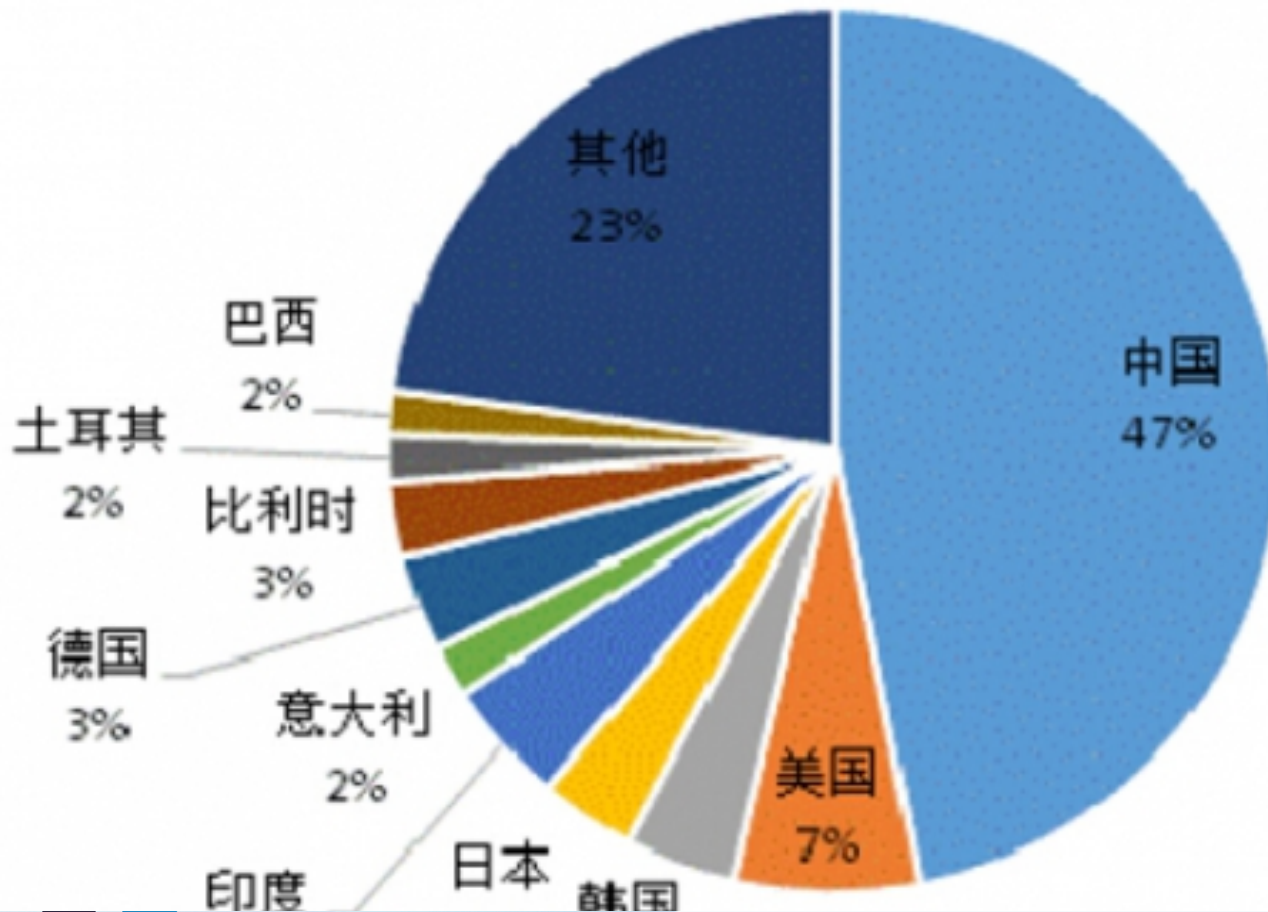
1.59 USD/lb  
28 Feb '18



**InfoMine.com**



The world zinc consumption in 2015  
China consumed 47% of all zinc products.



# 5 YEAR COPPER PRICE

3.15 USD/lb  
28 Feb '18





# The Thunderstruck Advantage/Thunderstruck優勢

- Excellent advanced mineral projects with multiple zones and high-grade copper, zinc and gold targets 優秀的高級階段礦產項目，擁有多個資源區以及高品位銅、鋅、白銀和黃金靶區
- Experienced management and technical team 經驗豐富的管理和技術團隊
- 100% owned in Nakoro and Wainaleka projects 擁有對Nakoro和Wainaleka項目的100%股權
- Tight corporate structure with just 43M shares outstanding 緊密的公司結構，只有4300萬股已發行股票
- Low-cost country for mineral exploration and mining 斐濟是礦產勘探和開采成本低的國家
- Close to good infrastructure and proximity to Asian markets 附近有良好的基礎設施和接近亞洲市場
- **Zinc, copper and gold are in demand!!** 鋅，銅，金的需求正在持續增長。

# Management Team

## **Bryce Bradley – Co-founder, President & CEO, Director**

With a strong background in Capital Markets and Investment Banking, Ms. Bradley has facilitated the structuring and financing of dozens of private and publicly traded small and micro-cap companies. She founded and served as President of Generic Capital and Saltus Mercantile Corp. (now Robson Capital Partners Corp.), both merchant banks focused on capital raising and advisory services for mining exploration companies.

## **Brien Lundin – Co-Founder, Chairman of the Board**

Mr. Lundin has been an active investor and speculator in the mining and technology sectors for over three decades. He is a co-founder and Chairman of Thunderstruck Resources, Ltd. (AWE.V). He is also a co-founder and Chairman, of Natcore Technology, Inc. (NXT.V). Mr. Lundin serves as President and CEO of Jefferson Financial, Inc., a privately held company that hosts the annual New Orleans Investment Conference, and writes Gold Newsletter.

## **Linnea von Hessert – Director**

Ms. von Hessert is a geologist with over 20 years experience in the mining industry, having worked for majors and juniors as well as the Bureau of Land Management in Nevada. She is an active investor with significant holdings in the mineral exploration industry. She graduated from the University of Montana with a B.S. in geology in 1999.

## **Lawrence Roulston – Director**

Mr. Roulston is a mining professional with over 35 years of diverse experience as a mining analyst and consultant. He is Managing Director of WestBay Capital Advisors, providing business advisory and capital markets expertise to the junior and mid-tier sectors of the mining industry. Previously, he was the editor of Resource Opportunities, an independent investment publication focused on the mining industry. Mr. Roulston holds a B.Sc. in geology. He is Chairman of Metalla Royalty and Streaming Ltd. (CSE:MTA) and an advisor to Metallis Resources Inc (TSXV:MTS).

## **Bill Brook – Country Manager**

Mr Brook has been working as a geologist in Fiji since 1980, and with the formation of Geopacific Limited in 1986 conducted preliminary sampling on Thunderstruck's portfolio of properties before discovering the Tuvatu gold deposit (currently in development with Lion One Resources) to the northwest.



## Contact Us 聯繫方式

### Thunderstruck Resources Ltd.

[www.thunderstruck.ca](http://www.thunderstruck.ca)

**Bryce Bradley, President/CEO 總裁兼董事**

Email 電郵: [bryce@thunderstruck.ca](mailto:bryce@thunderstruck.ca)

Phone 電話: (604) 349-8119

**Haibin Gao, Consultant 顧問**

Email: [haibin.gao@hotmail.com](mailto:haibin.gao@hotmail.com)

WeChat 微信: laogu204

Phone 电话: (437) 998-7708